

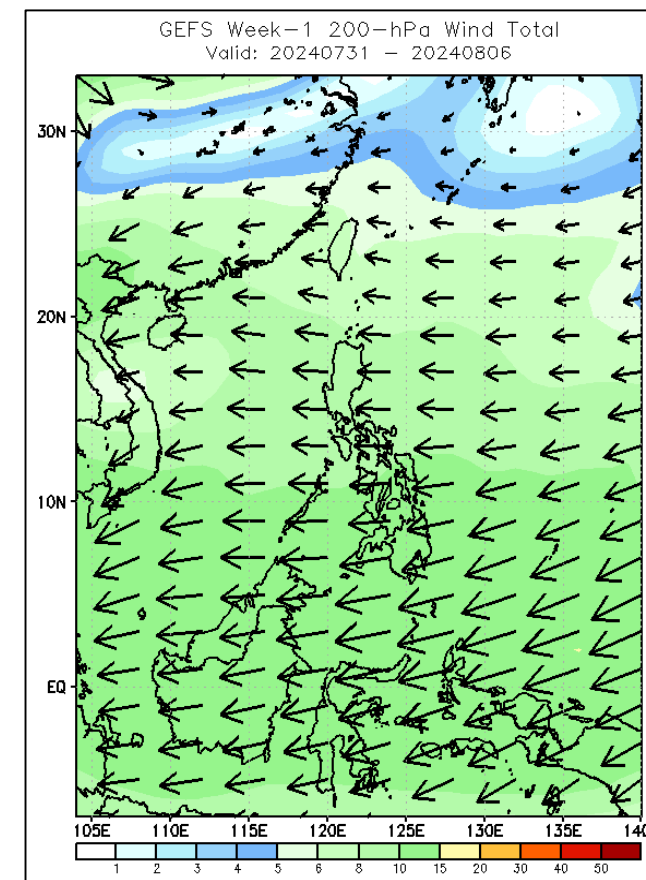
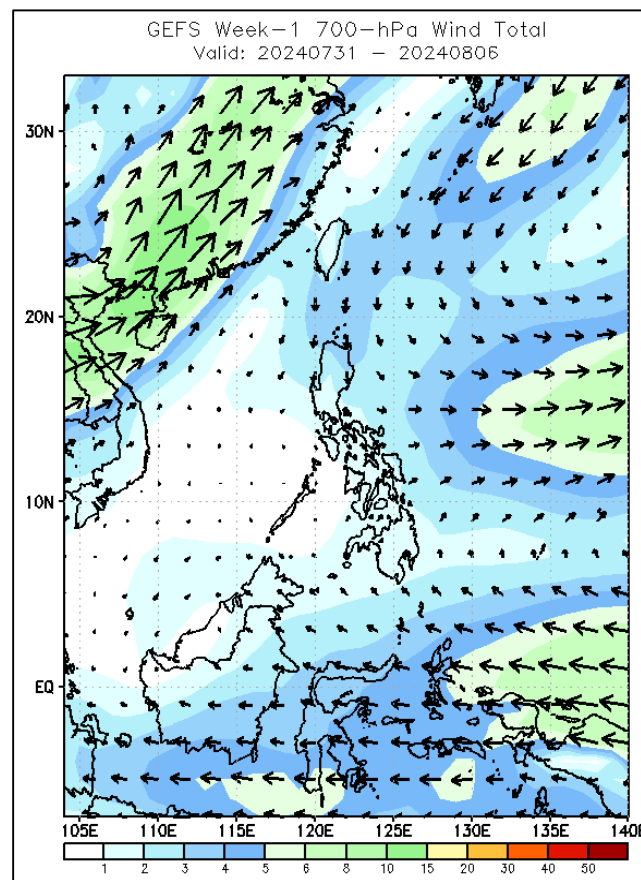
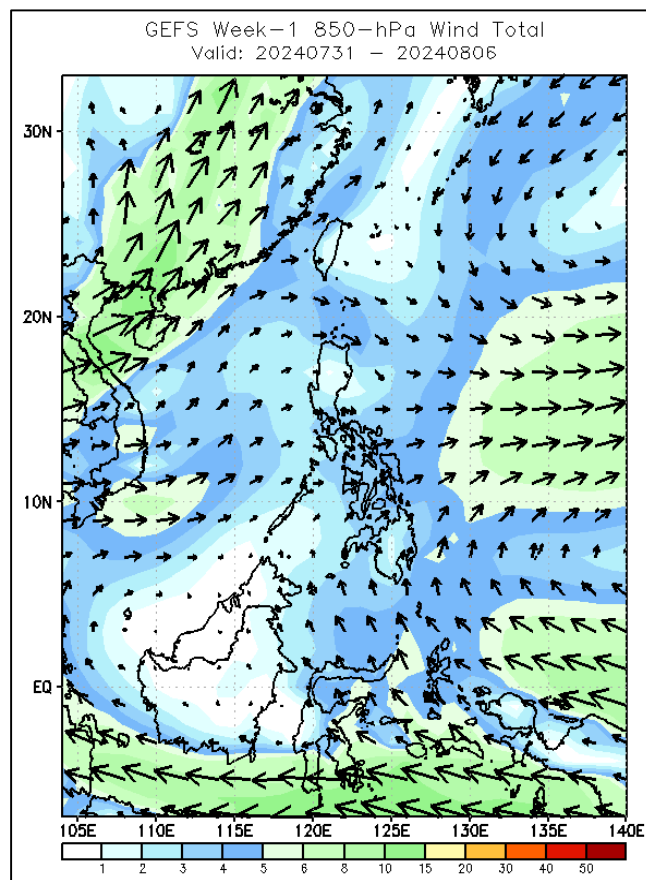


# Week 1 & Week 2 Forecast for the Philippines using GEFS Model



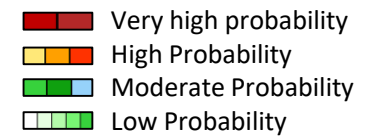
# GEFS Week-1 Wind Forecasts:

Week 1: Jul 31-Aug 06, 2024



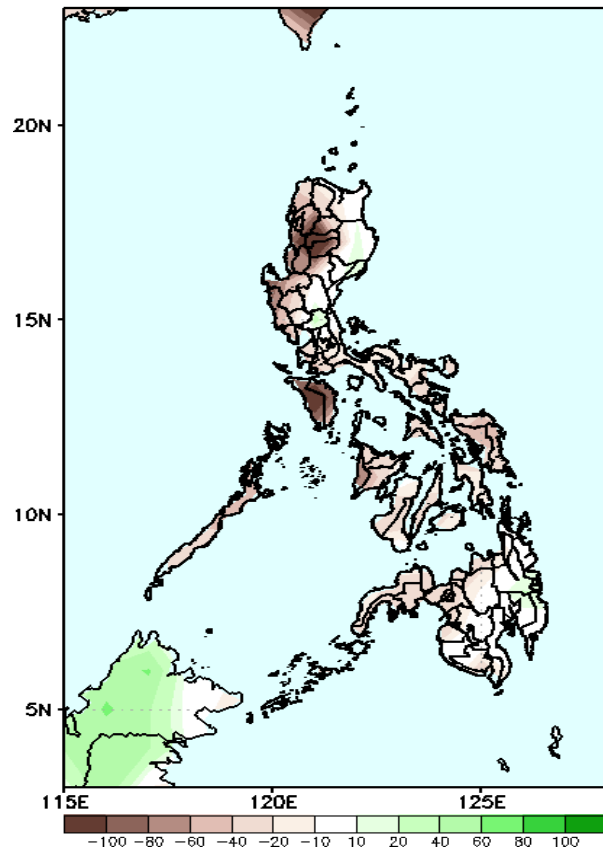
Southwest Monsoon affecting Western sections of Luzon. Easterlies affecting the rest of the country during the forecast period

# Precipitation Anomaly and Exceedance Probability > 25/50 mm



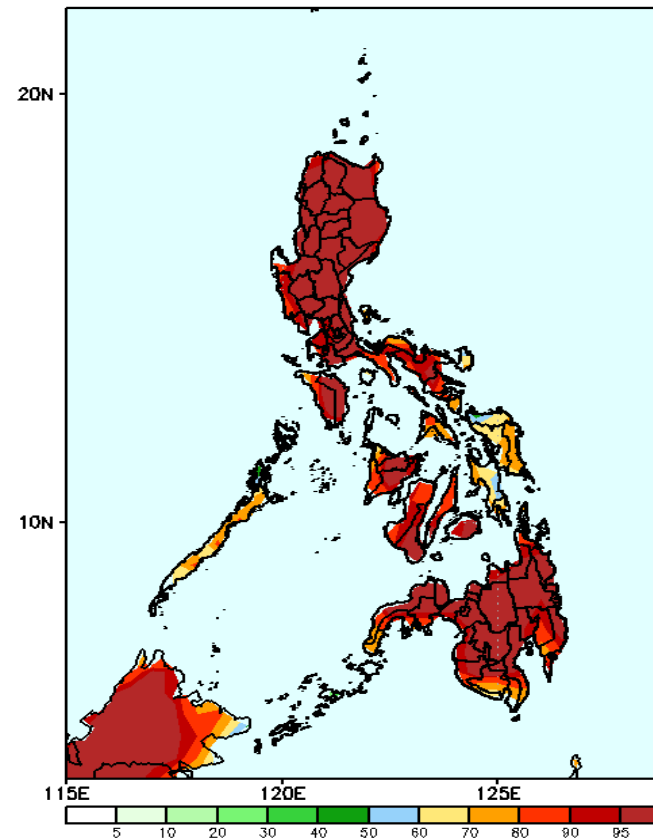
## Week 1: Jul 31-Aug 06, 2024

GEFS Week-1 Precip Anomaly  
Valid: 20240731 - 20240806



Rainfall deficit of more than 100mm Rainfall is expected in Mindoro provinces, Mt. Province, and Ifugao; 20-80mm over the rest of the country.

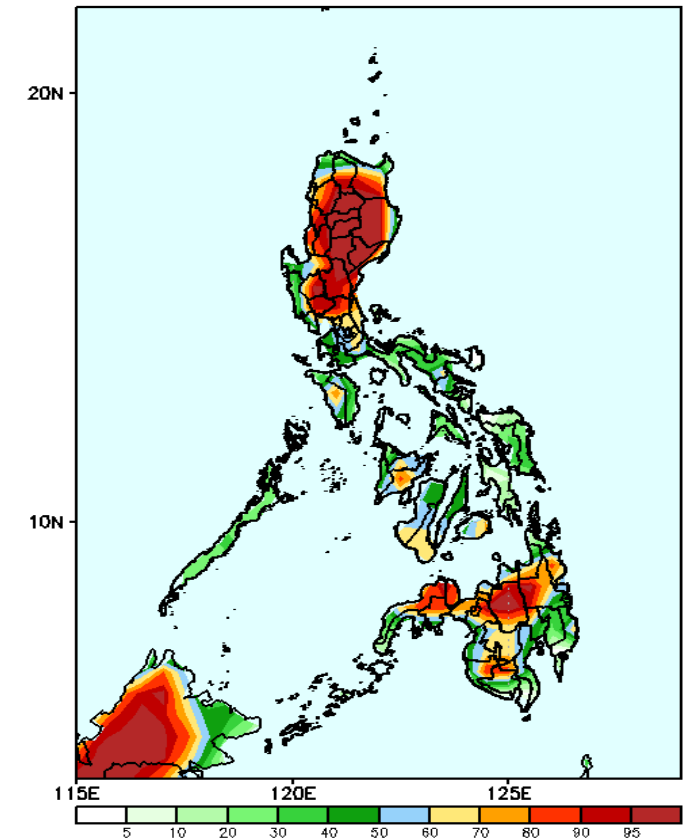
GEFS Week-1 Exceedance Prob. > 25mm  
Valid: 20240731 - 20240806



### Probability to Exceed 25mm

- Moderate to high over Northern and Central Luzon, most of Western Visayas and Negros Is. and most of Mindanao;
- Low to moderate over the rest of the country.

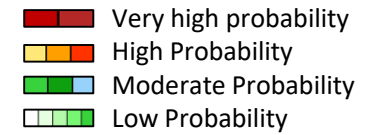
GEFS Week-1 Exceedance Prob. > 50mm  
Valid: 20240731 - 20240806



### Probability to Exceed 50mm

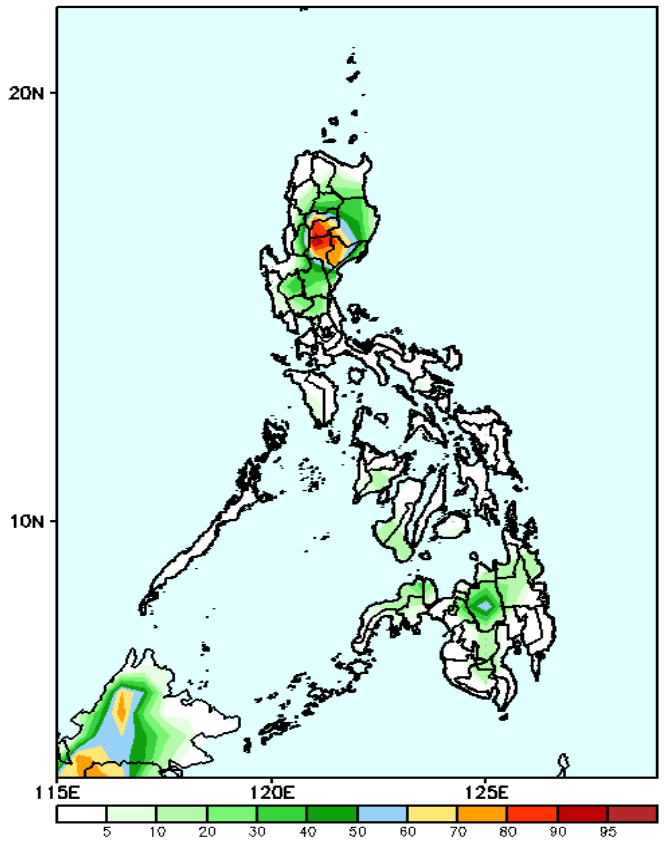
- Moderate to high over portions of Northern Luzon, Tarlac, Pampanga, Nueva Ecija, Bulacan, Bukidnon, and Lanao del Sur;
- Low to moderate over the rest of the country.

# Exceedance Probability > 100/150/200 mm



## Week 1: Jul 31-Aug 06, 2024

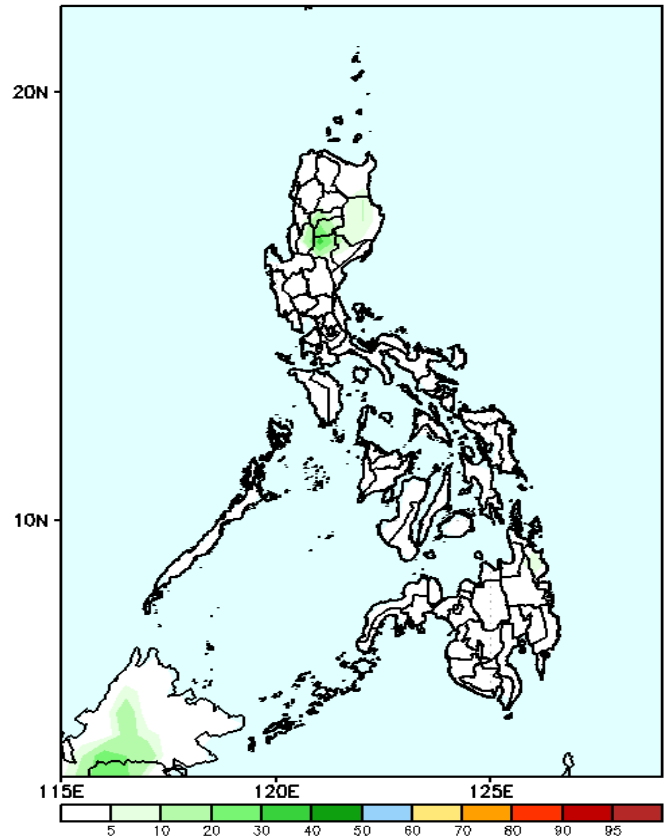
GEFS Week-1 Exceedance Prob. > 100mm  
Valid: 20240731 - 20240806



### Probability to Exceed 100mm

- Moderate to high over Mountain Province, Ifugao, Nueva Vizcaya and portions of Isabela, Benguet and Bukidnon.
- Low over the rest of the country.

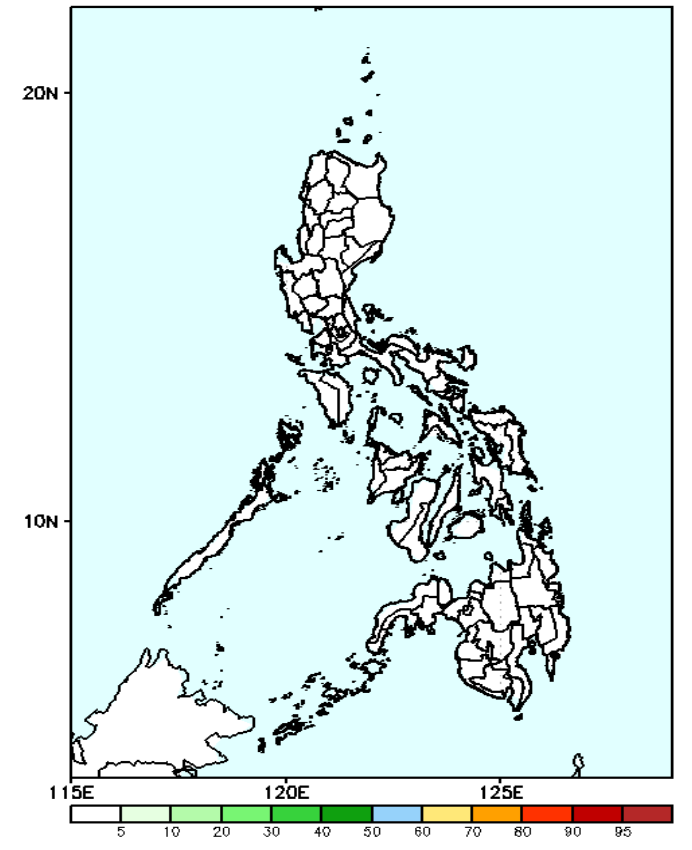
GEFS Week-1 Exceedance Prob. > 150mm  
Valid: 20240731 - 20240806



### Probability to Exceed 150mm

- Low across the country.

GEFS Week-1 Exceedance Prob. > 200mm  
Valid: 20240731 - 20240806



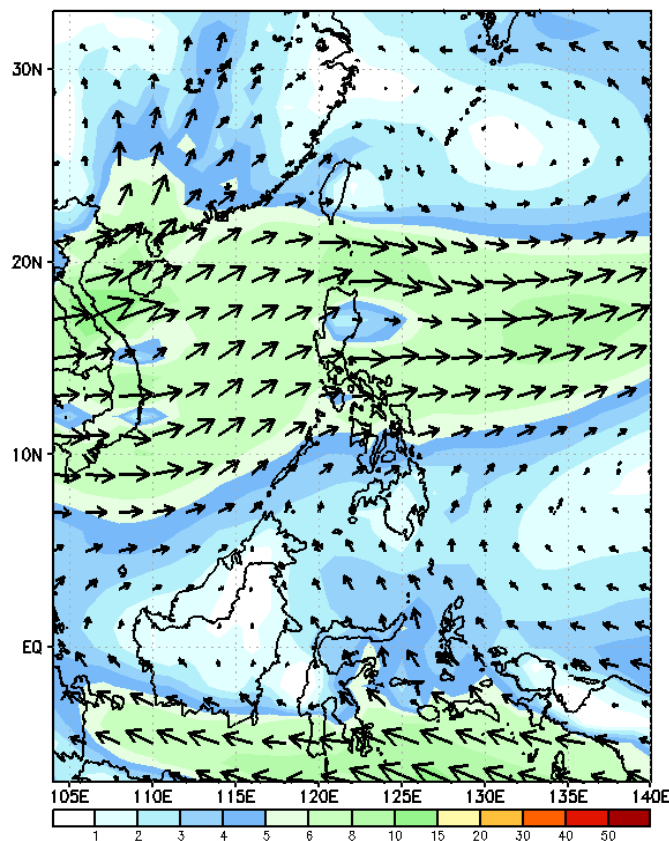
### Probability to Exceed 200mm

- Low across the country.

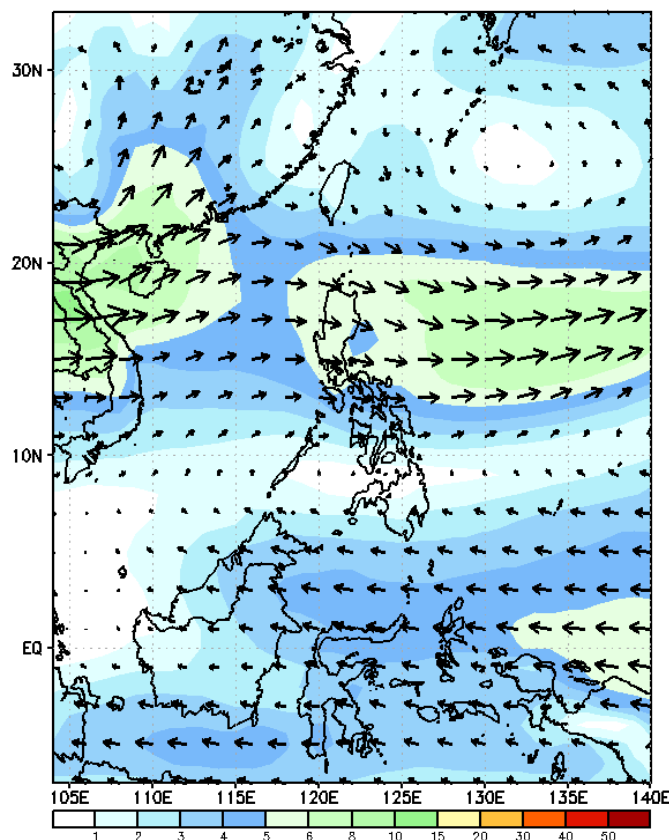
# GEFS Week-2 Wind Forecasts:

Week 2: Aug 07-13, 2024

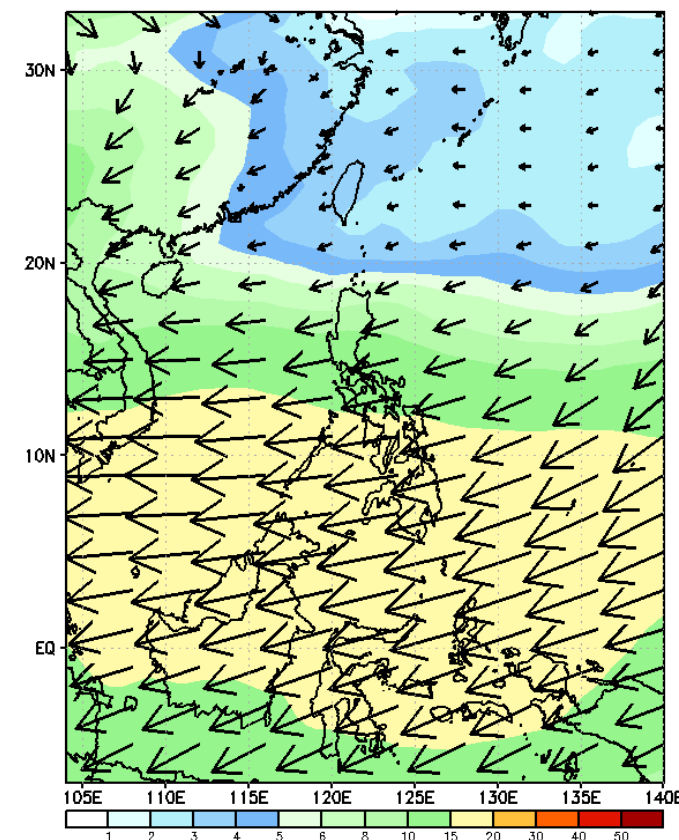
GEFS Week-2 850-hPa Wind Total  
Valid: 20240807 - 20240813



GEFS Week-2 700-hPa Wind Total  
Valid: 20240807 - 20240813

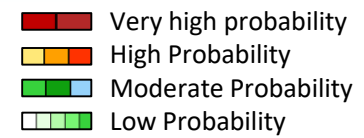


GEFS Week-2 200-hPa Wind Total  
Valid: 20240807 - 20240813

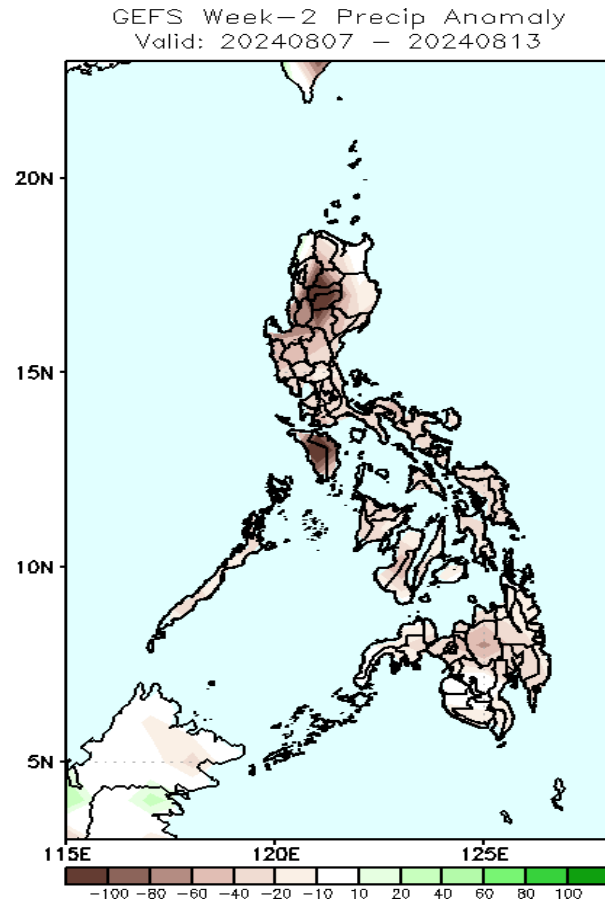


Southwest Monsoon affecting western section of Luzon and Visayas. Easterlies affecting the rest of the country during the forecast period

# Precipitation Anomaly and Exceedance Probability > 25/50 mm

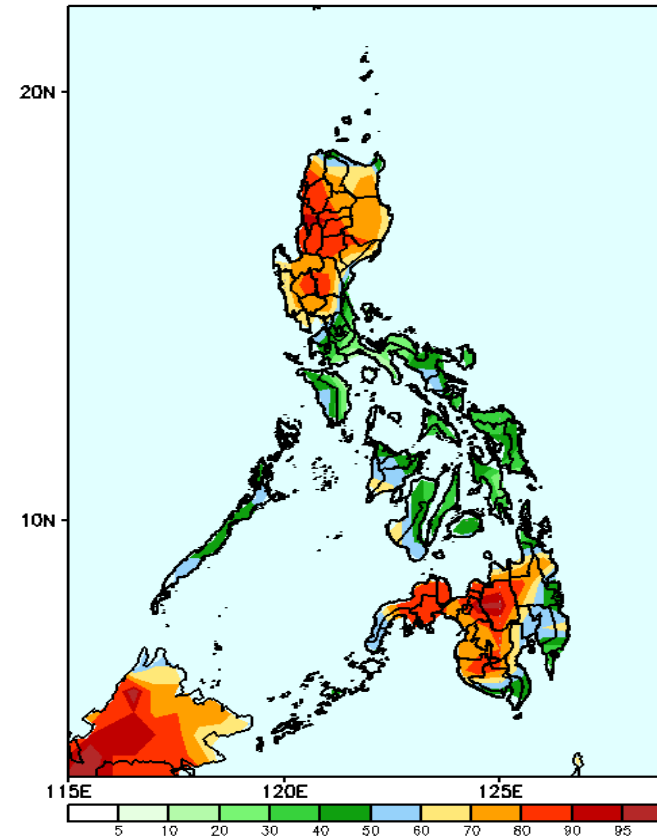


Week 2: Aug 07-13, 2024



Rainfall deficit of more than 100mm is expected in Mindoro provinces, Mt. Province, and Ifugao; and 20-80mm over the rest of the country.

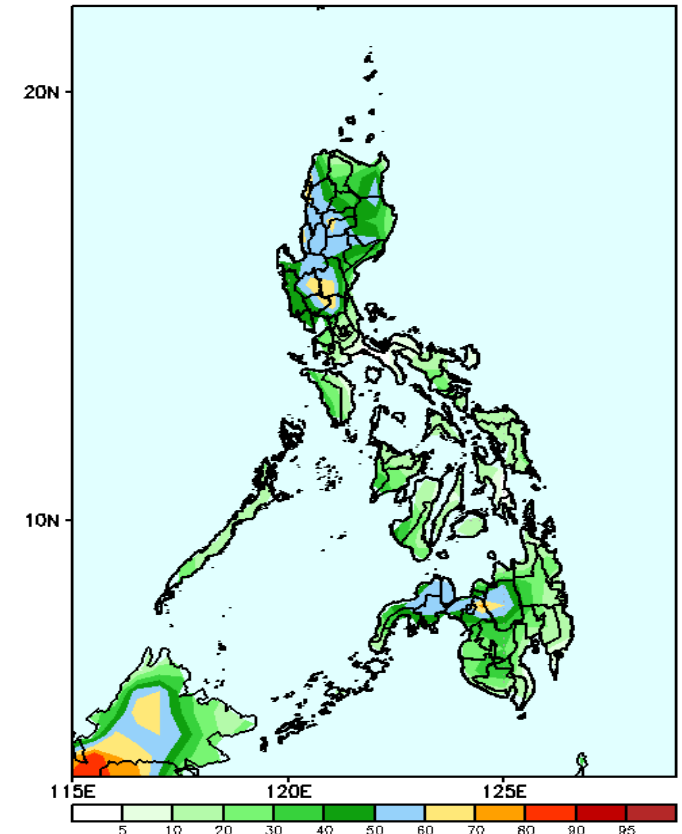
GEFS Week-2 Exceedance Prob. > 25mm  
Valid: 20240807 - 20240813



### Probability to Exceed 25mm

- Moderate to high over Northern and Central Luzon and the western and central parts of Mindanao;
- Low to moderate over the rest of the country.

GEFS Week-2 Exceedance Prob. > 50mm  
Valid: 20240807 - 20240813

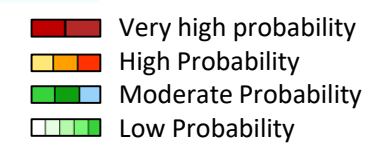


### Probability to Exceed 50mm

- Moderate to high over the western parts of Northern and Central Luzon;
- Low to moderate over the rest of the country.

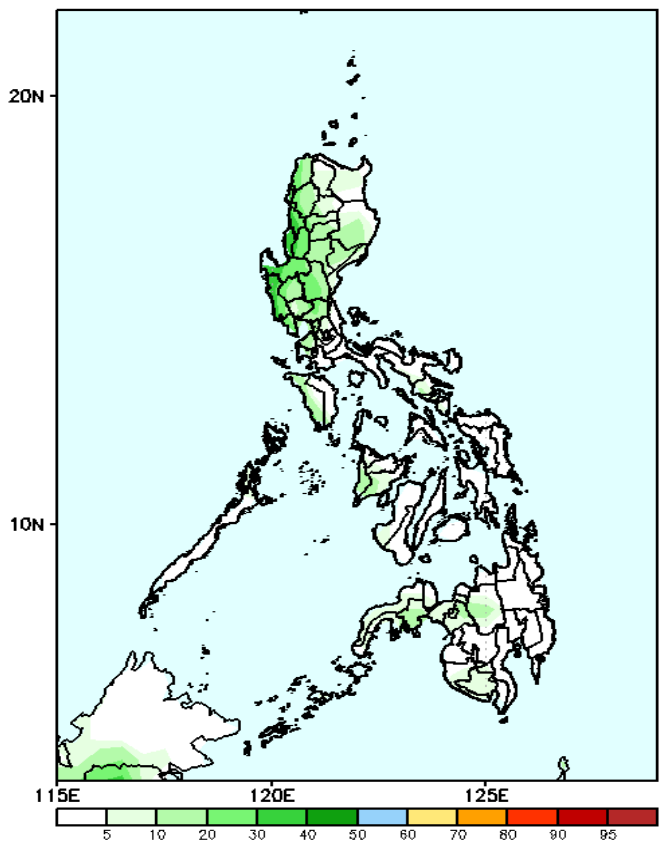


# Exceedance Probability > 100/150/200 mm



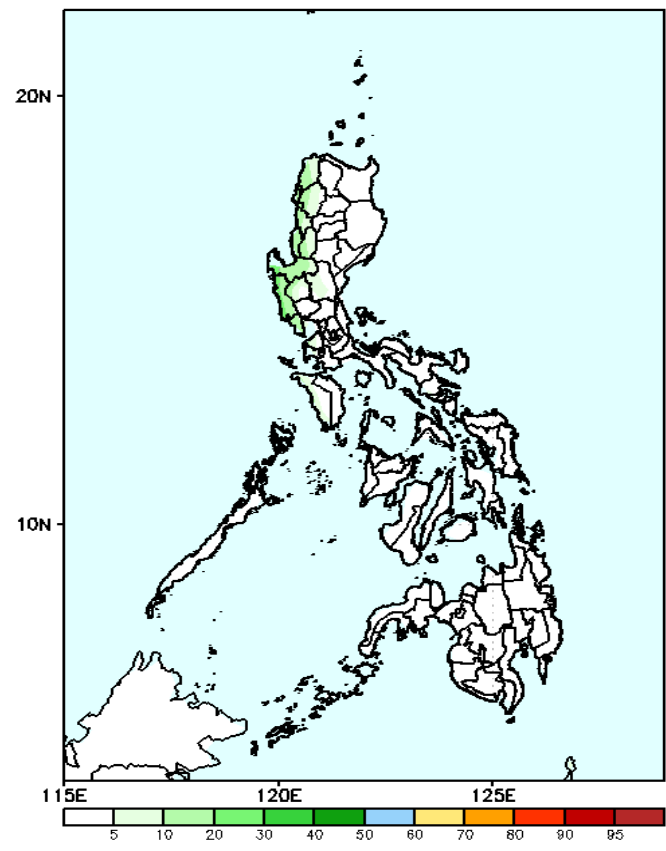
## Week 2: Aug 07-13, 2024

GEFS Week-2 Exceedance Prob. > 100mm  
Valid: 20240807 - 20240813



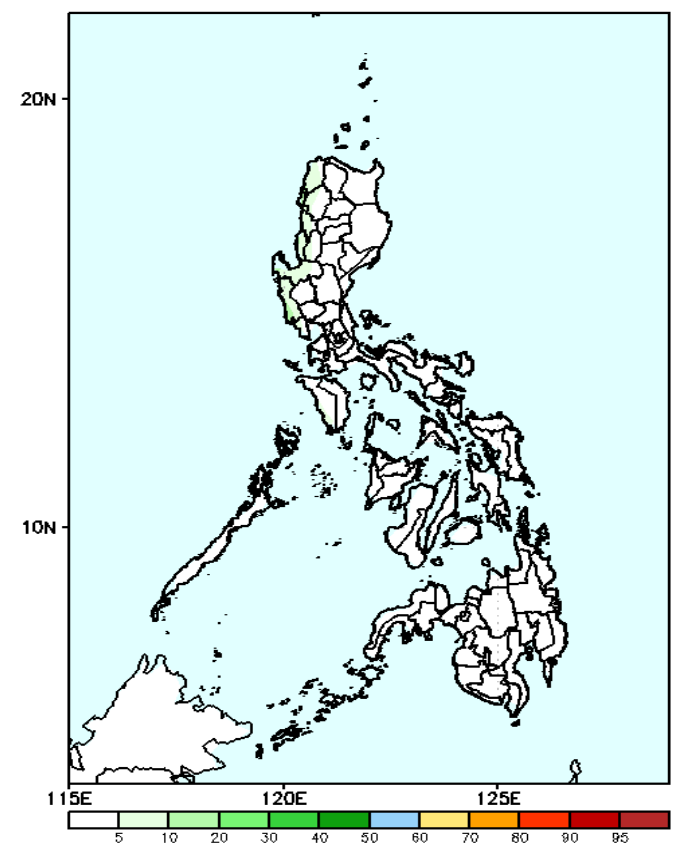
**Probability to Exceed 100mm**  
• Low probability across the country.

GEFS Week-2 Exceedance Prob. > 150mm  
Valid: 20240807 - 20240813



**Probability to Exceed 150mm**  
• Low probability across the country.

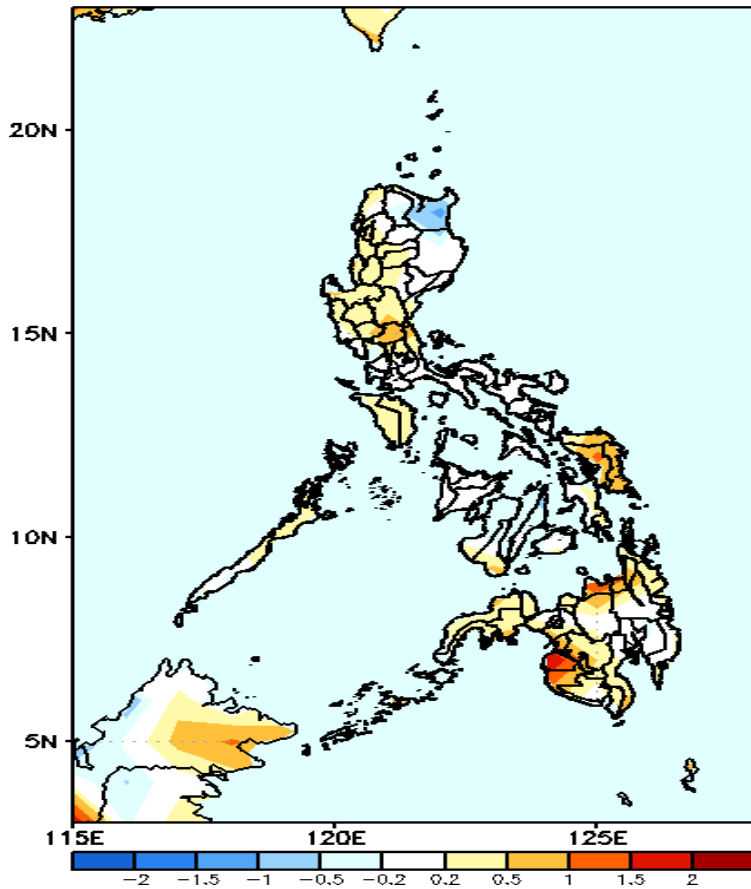
GEFS Week-2 Exceedance Prob. > 200mm  
Valid: 20240807 - 20240813



**Probability to Exceed 200mm**  
• Low probability across the country.

# GEFS Week-1 & 2 Forecasts: T2m Anomaly

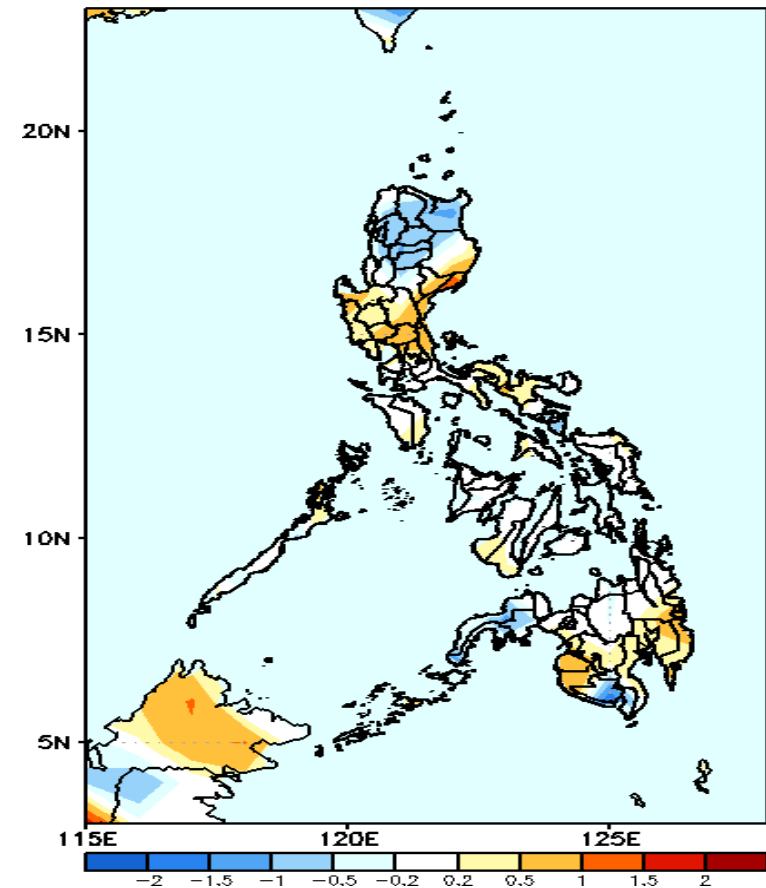
GEFS Week-1 T2m Anomaly  
Valid: 20240731 - 20240806



## 2m Temperature Week 1: Jul 31-Aug 06, 2024

Near to warmer surface air temperature will likely be experienced in most parts of the country except in Cagayan where slightly cooler than average surface air temperature is expected.

GEFS Week-2 T2m Anomaly  
Valid: 20240807 - 20240813



## 2m Temperature Week 2: Aug 07-13, 2024

Near to slightly warmer surface air temperature will likely be experienced in most parts of the country except in northern Luzon, Zamboanga Peninsula and South Cotabato where slightly cooler than average surface air temperature is expected.